

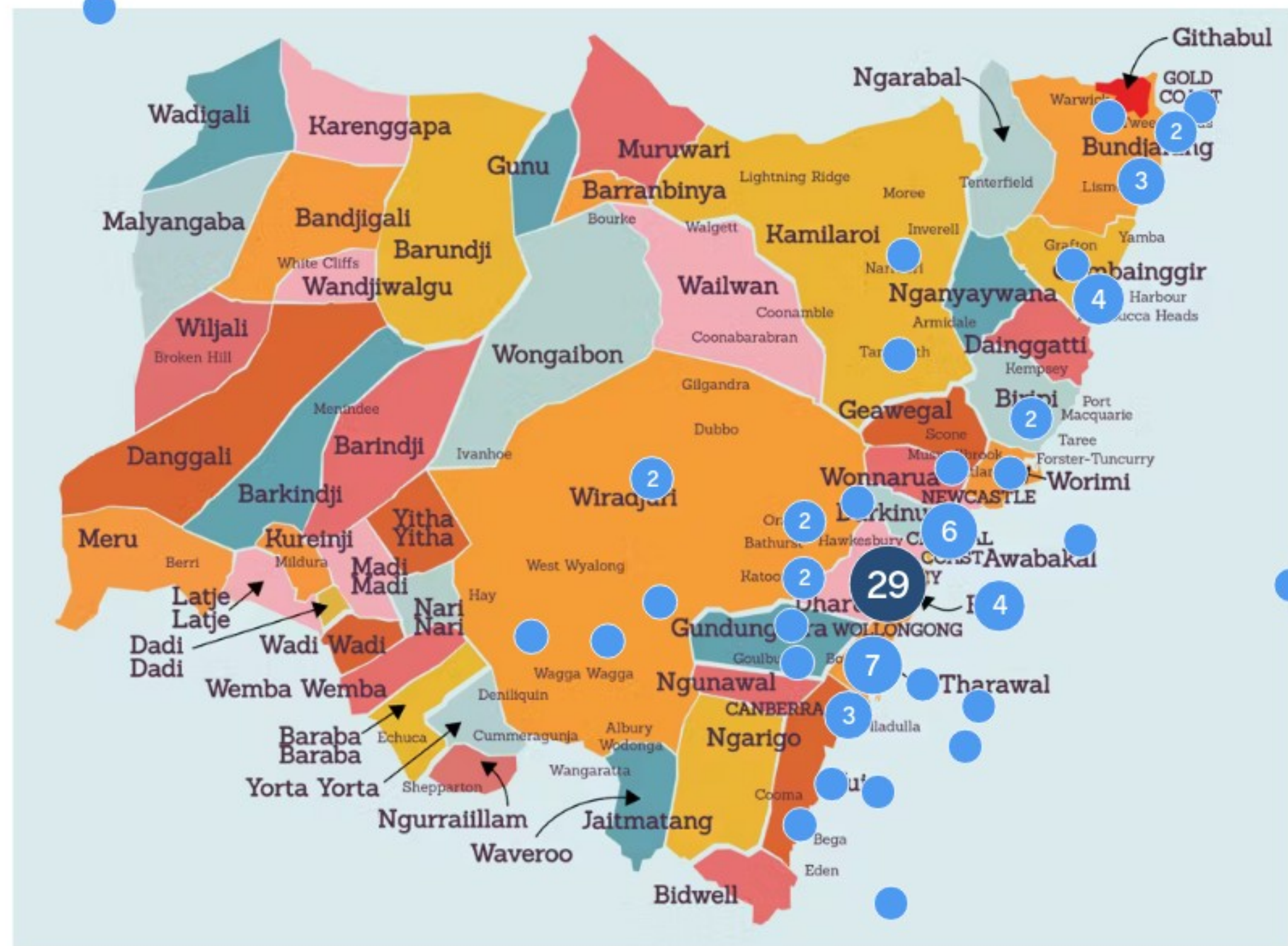


Safe Children,
Strong Families,
Supportive Communities

Sector Conversation

- Draft TEI & FCS Specifications

Welcome to today's session. We invite you to pin where you're dialing in from on the map





Acknowledgement of Country

The Gadigal people are the Traditional Custodians of the land on which our office stands. We pay our respects to Elders past and present.

We also acknowledge the Traditional Custodians of the land on which our member organisations operate and the lands on which we travel across for our work.

Today's Sector Conversation



Welcome
Intro



DCJ
Specifications



What we have
heard so far



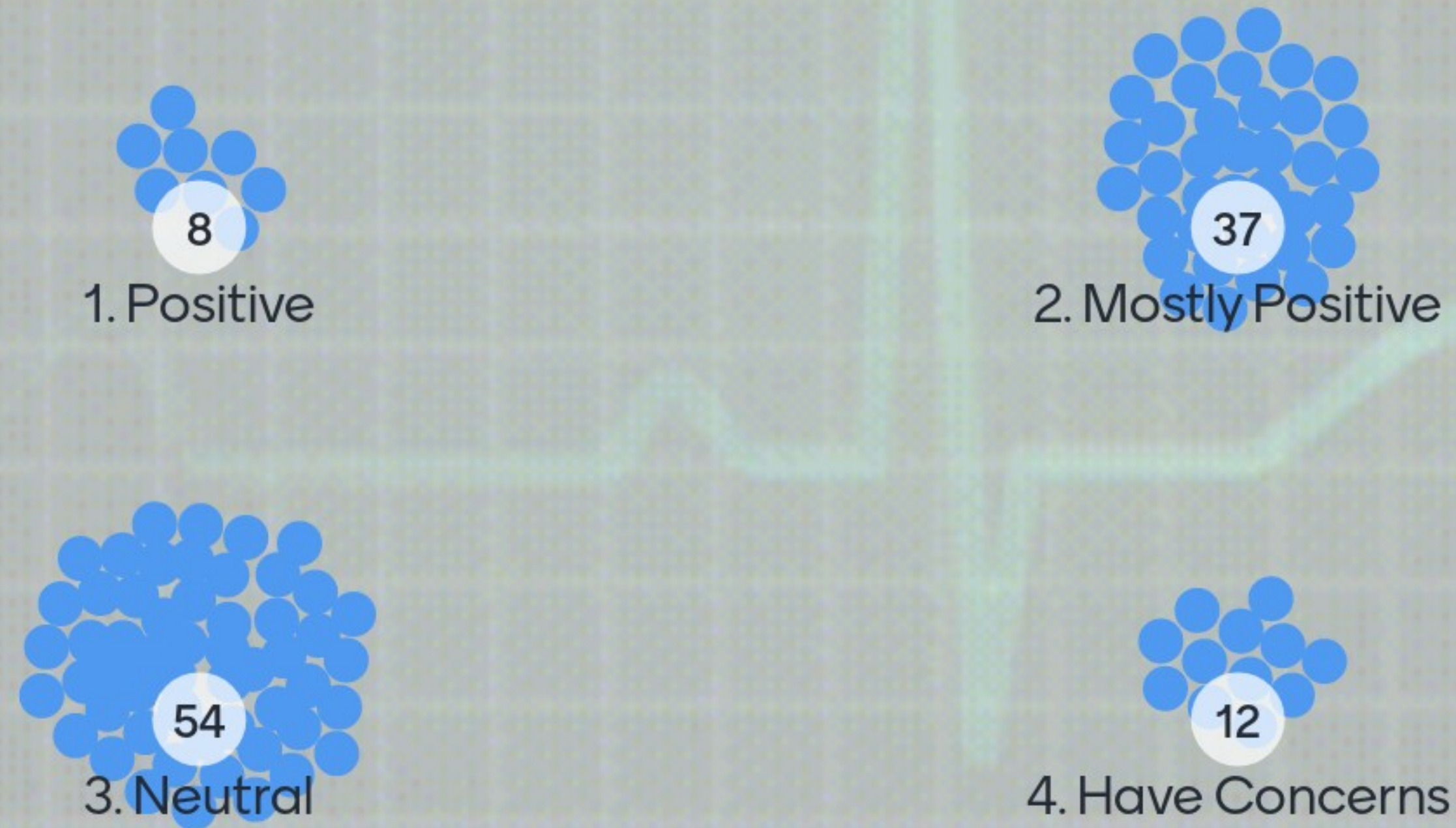
Q&A



Next Steps



Pulse Check: How do you feel about the draft specifications?



Draft TEI & FCS Specifications

Anthony Shannon

Director, Early Intervention

Claire Edmonds & Amanda Jones

Manager, Early Intervention Evidence and Strategy

Targeted Earlier Intervention & Family Connect and Support Program Specifications 2025

Anthony Shannon, Claire Edmonds, and Amanda Jones – DCJ Early Intervention



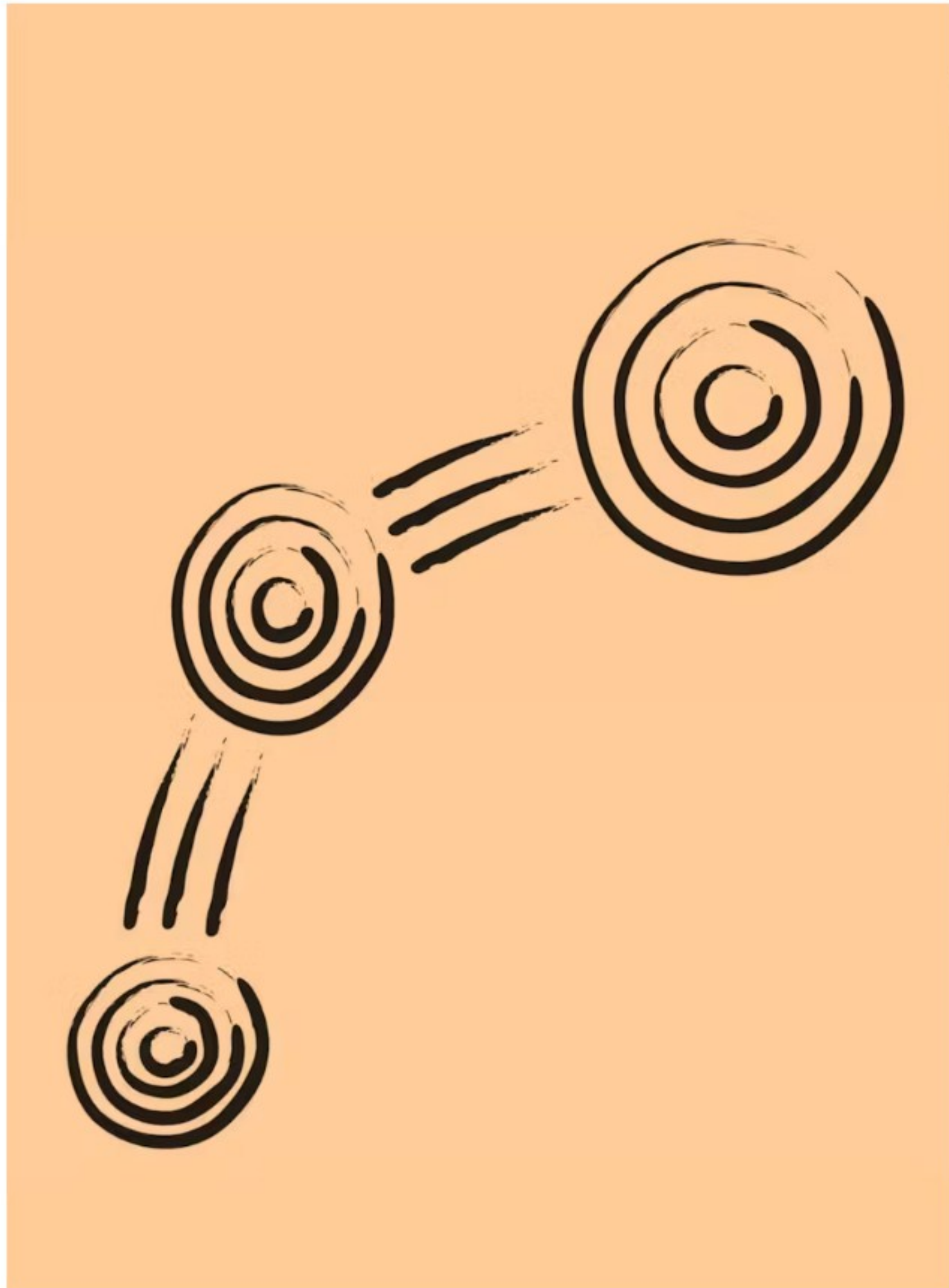
June 2024



Acknowledgement to Country

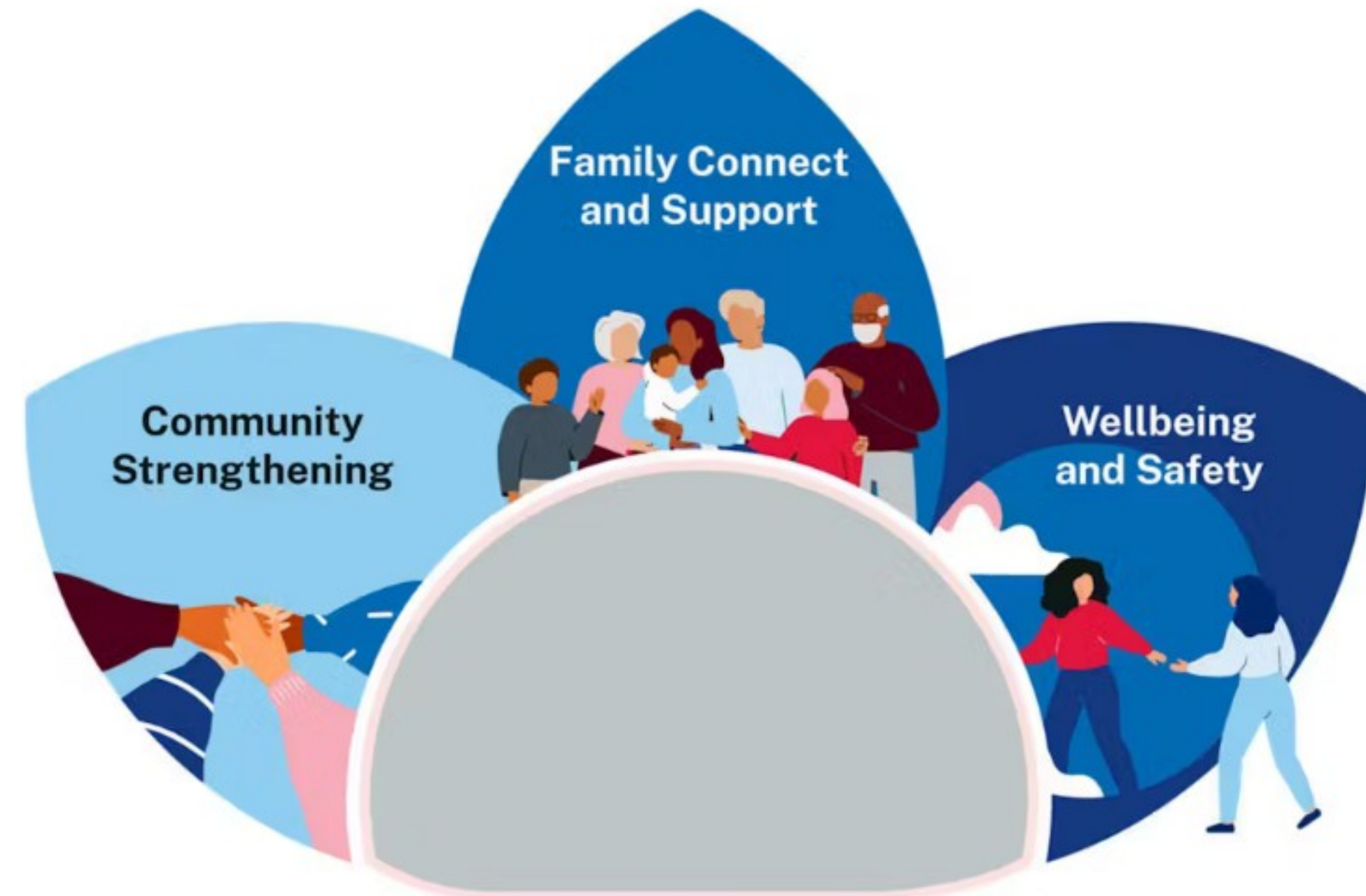
I acknowledge the Traditional Custodians of the lands that we are all meeting from today. I pay my respects to Elders past, present and emerging and celebrate the diversity of Aboriginal peoples and their ongoing cultures and connections to the lands and waters of NSW.

I also acknowledge and pay my respects to our Aboriginal and Torres Strait Islander people/colleagues joining us today.



What to expect today

1. Overview of the key changes to the program specifications
2. Sector feedback we have received and how it is being incorporated in the program specifications
3. Questions



Communities are strengthened, and **vulnerable children, young people and families** can access local support based on their changing needs.



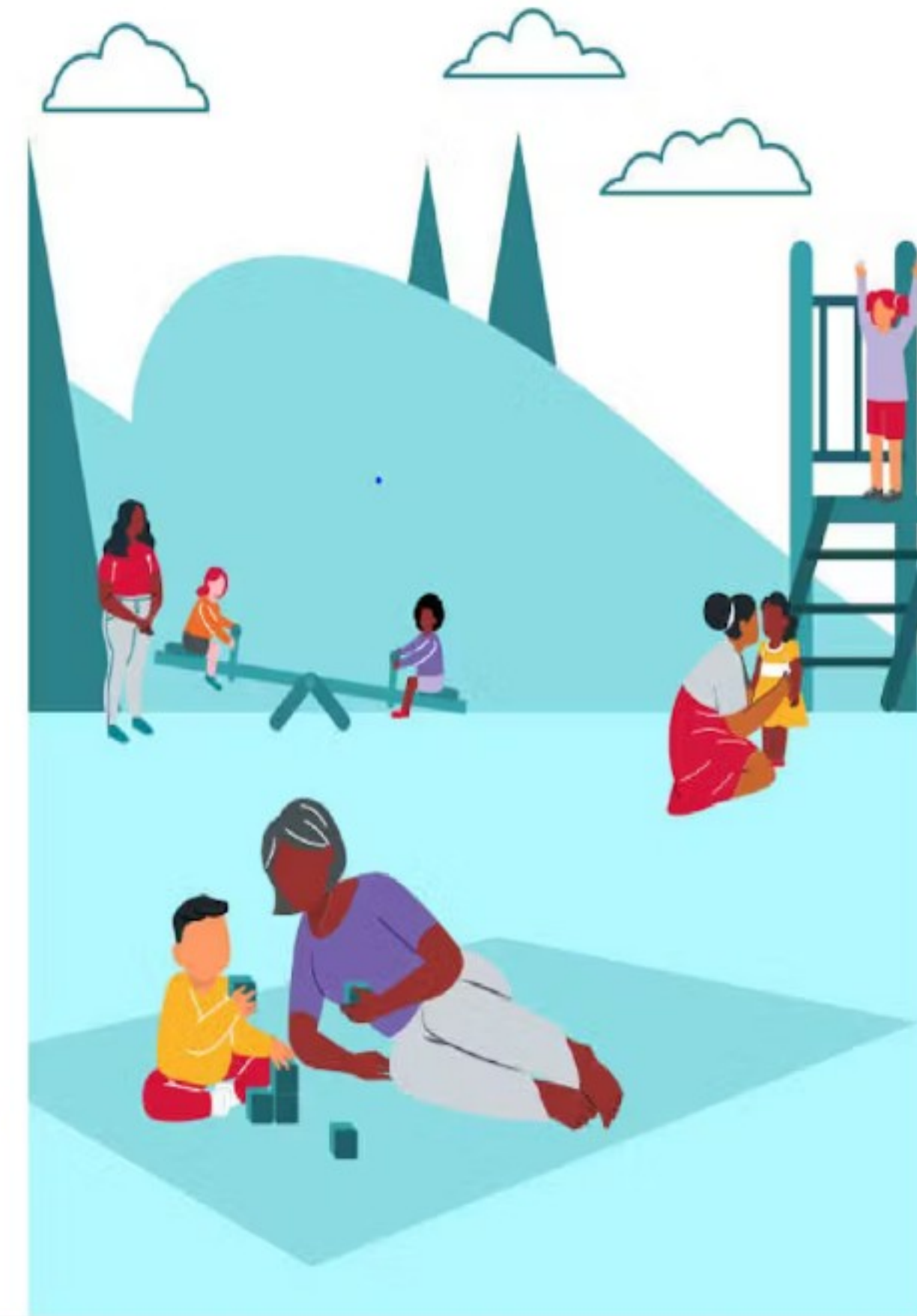
Overview of key changes to the specifications



1. Integrating TEI and FCS into one program.
2. Family Connect and Support maintained as a specific model.
3. Increasing focus on early intervention
4. New name for the program.
5. Updated policy framework

The below will be discussed in more detail throughout this presentation:

5. Simplifying and streamlining DEX reporting.
6. Embedding evidence in the program including through program wide, program logics.
7. Increased focus on cultural safety including outcomes for Aboriginal people in the TEI Client Outcomes Framework.
8. Inclusion of TEI service system outcomes and program requirements, including a greater focus on flexibility.



Streamlined Program Activities and Service Types

Program activity	Community Strengthening	Family Connect and Support	Wellbeing and Safety
Program activity	1. Develop community connections 2. Provide a community centre 3. Provide community supports	4. Provide targeted support 5. Provide intensive or specialist support	
Service types	<ul style="list-style-type: none"> • advocacy and support • business planning • community engagement • community sector coordination • community sector planning • education and skills training • facilitate employment pathways • Indigenous advocacy/support • Indigenous community engagement • Indigenous healing activities workshops • Indigenous social participation • information/advice/referral • social participation 	<ul style="list-style-type: none"> • active holding • brokerage • case plan completed • family capacity building • family group conferencing • information/advice/referral • intake/assessment • referral received 	<ul style="list-style-type: none"> • counselling • education and skills training • family capacity building • Indigenous support playgroups • Indigenous social participation • information/advice/referral • intake/assessment • material aid • mentoring/peer support • parenting programs • specialist support • supported playgroups • youth individualised support





Who is TEI for?

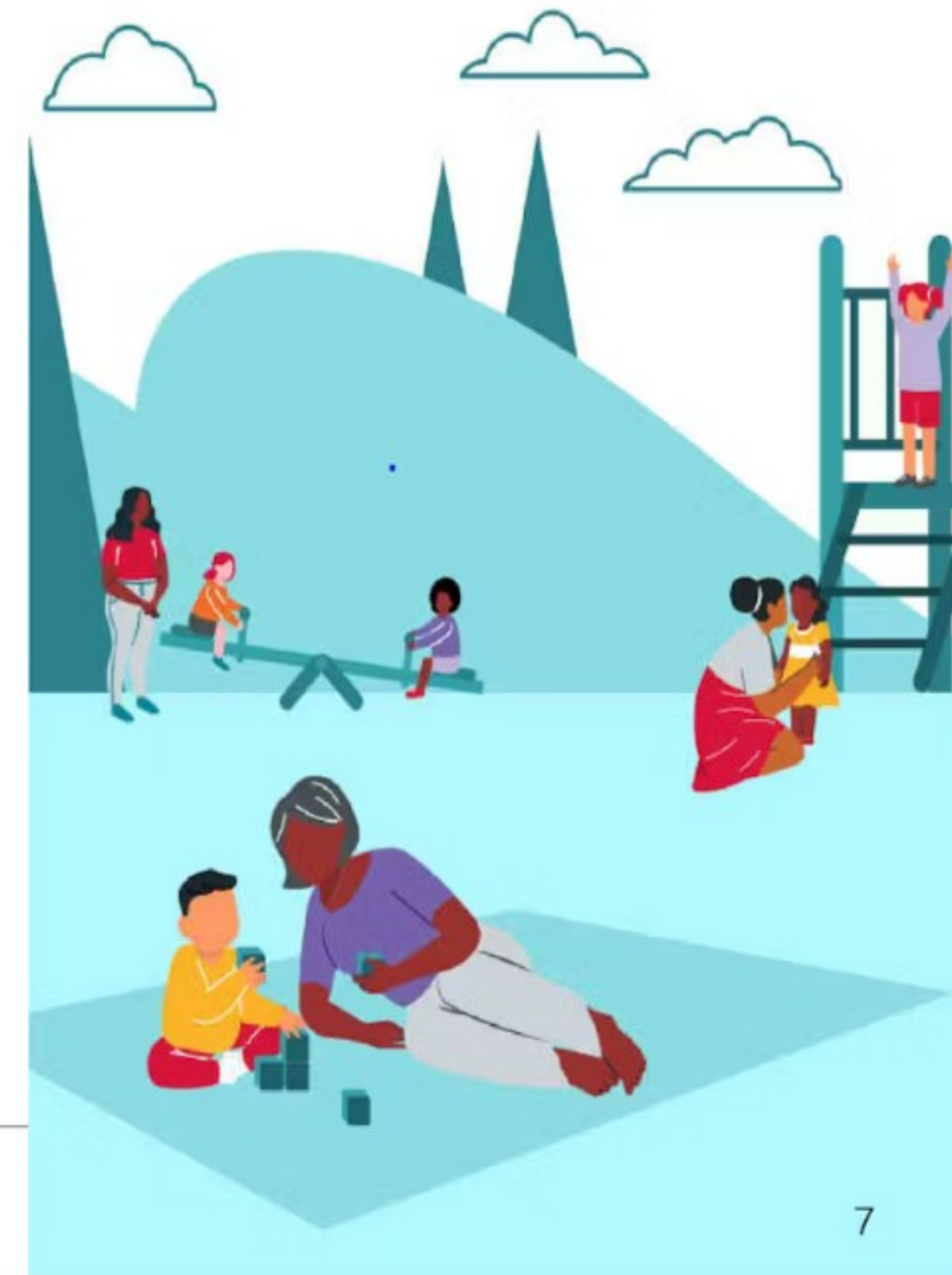
The target population for the TEI program is children, young people, families and communities within NSW who are in need.

TEI target groups

- Aboriginal children, young people, families and communities.
- 0-5 year olds.
- Children and young people at risk of disengagement from school, family and community.
- Young parents with known vulnerabilities or who are experiencing a number of hardships.
- Children and young people affected by a mental health condition/s.

Embedding evidence into the program

- Five **program logics** reflect evidence across the spectrum of the early intervention program:
 1. Cultural Safety and Wellbeing
 2. Community Strengthening
 3. Family Connect and Support
 4. Wellbeing & Safety – Children and Families
 5. Wellbeing & Safety – Young people
- TEI service providers should use these program logics to develop their individual program logics.
- Cultural safety and wellbeing should be embedded in all service delivery. A separate program logic at the service level is not required.
- FCS providers not required to develop an individual program logic.
- We are embedding a core components approach into service delivery for the Wellbeing and Safety program activity for children and families.



Preventing Child Maltreatment (PCM) core components and service types



Core Component	Service types (based on 2019 Program Specs)	Service types (based on draft Program Specs for 1 July 2025)
Engagement	All service types	All service types
Case management	Family capacity building Information/advice/referral Intake/assessment Material aid Specialist support	Family capacity building
Parental education coaching & modelling	Education & skills training Family capacity building Indigenous supported playgroups Parenting programs Supported playgroups	Education & skills training Family capacity building Indigenous supported playgroups Parenting programs Supported playgroups
Parenting self-care & personal development	Counselling Family capacity building Specialist support	Counselling Family capacity building Supported playgroups Specialist support
Building supportive relationships & social networks	Family capacity building Indigenous supported playgroups Indigenous social participation Mentoring/peer support Parenting programs Supported playgroups	Family capacity building Indigenous supported playgroups Mentoring/peer support Parenting programs Supported playgroups



Wellbeing and Safety program activity - Parenting Programs and Supported Playgroups



- If delivering parenting programs or supported playgroups providers are expected to use the evidence and select from list of evidence-informed models where possible.
- Other models can be used subject to negotiation with contract manager and consideration of available evidence, local context and need.
- Exception for Indigenous Supported Playgroups.
- The list of parenting programs and supported playgroup models will be part of the program specifications..





Strengthening cultural safety

- The program specifications detail how the program will achieve this at a policy, service and practice level.
- The new specifications include a Cultural Safety and Wellbeing Program logic which has six critical elements of cultural safety found through the Cultural Safety and Wellbeing evidence review: and the eight common features from the Aboriginal led early support evidence review.
- Providers will be expected to embed the principles of the program logic in their service design and delivery.
- The program specifications also incorporate the principles of Indigenous Data Sovereignty and Governance.
- Outcomes for Aboriginal people will be codesigned with ACCO's and Aboriginal staff from non-ACCO services for inclusion in the TEI client outcomes framework.



Introducing Service System Outcomes and program requirements



TEI Service System Outcomes

- strengths based
- flexible and responsive
- culturally safe
- capable
- collaborative
- person centred
- evidence informed

Program Requirements

- supporting the cultural safety and wellbeing of Aboriginal people
- supporting the cultural safety and wellbeing of CALD communities
- flexible timeframes
- effective engagement and assessment
- referral pathways and sector collaboration
- referrals to early years universal services
- Free and accessible



What we have heard and what we have done

Throughout the consultation process, suggestions have been made to strengthen the program specifications.

The Specifications have been updated to reflect the following feedback:

Additional program requirements to strengthen the TEI program's commitment to cultural safety for CALD individuals and communities

Clarification around target groups and who providers need to work with, including clarification of the new target group to the TEI program.

Greater focus and integration of family violence and its impacts

Updated language from open timeframes to flexible timeframes

Clarification about program logics and how they should be applied

Additional program requirement around free and accessible services, relating to feedback received from the TEI evaluation



Next steps – we want to hear from you!



1. Sector feedback until 16 August 2024.

2. FCS and TEI final evaluation reports in second half of 2024 – sector consultation and amendments to the specifications as required.

3. Final specification available in early 2025.



What Fams has heard from the sector



Q&A - it's your turn to ask

If some service types are merged would that impact funding? eg if we are currently funded for both

There was a point made pg 22 about meeting in a neutral location not where office is. The cost to do that would be great and there also is limited local locations

When will the FACSIAR supported playgroup evidence scan be available?

Is the new list released today in addition to the programs listed in program activity 3, page 22 for supported playgroups.

Will the Auditor General's reports, recently released, have any impact on the service specifications

We have seen an increase in material aid by carers who are elderly and are currently not funded. They are caring for grandchildren etc

There will be a large cost in training staff in new Playgroup models, will this training be free?

How are community centres with current adult and aged clients going to integrate or is it a complete change to what a community centre is

Q&A - it's your turn to ask

If different service providers are delivering FCS and TEI services in the same district, then how will it be tackled under this new proposed TEI program specification?

Will the CAT tool become a required document for the TEI providers who are delivering wellbeing and safety activity

Please clarify: is community strengthening about communities broadly or is it in the context of providing specific services and programs to target groups?

Can you please clearly state where Neighbourhood Centres fit into all of this? There vast range of activities for all people and communities still seems to be ignored.

1 in 3 children in out of home care have a disability. As identified in the NDIS review it is a desert outside the NDIS. No case work in NDIS. Just wondering why this group largely absent?

Interested in the supports only being primarily for young parents. Increasingly, heard that more 'older' parents coming in for supports. Should this also be a priority, as it is about the infant/chi

Will COPs be given training to ensure there is consistency across the sector? Differnt organisations get different feedback from their COPs

Some of the parenting programs are really expensive per person. How will the costs of these be covered within existing budgets? Will this be coordinated across the sector to get best values costs?

Pulse Check: How do you feel after today's session?



1. Positive



2. Mostly Positive



3. Neutral



4. Have Concerns

Next steps

- Join us for a **sector only** TEI & FCS Specification Consultation Wednesday 24 July 1 to 2.30pm (TEI & FCS Network)
- EOI for Working group to consolidate and review feedback from the sector

SCAN HERE



**TO REGISTER FOR TEI & FCS
NETWORK KICKOFF!**

Has this session been helpful?

